



## Homs Road

Ross-On-Wye, HR9 7DE

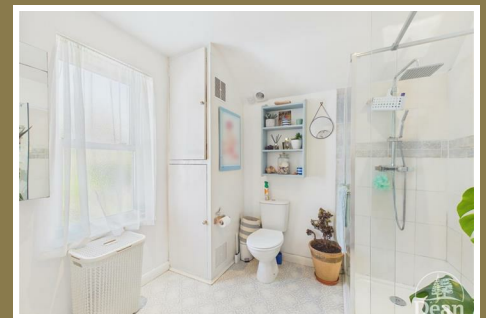
Offers Over £300,000



A well-presented and characterful four bedroom three storey mid-terraced home, situated in the heart of Ross-on-Wye. Blending period charm with modern living, this delightful property offers spacious and versatile accommodation across three floors.

The home retains a wealth of original features including sash windows, fireplaces, and decorative detailing, whilst benefiting from a stylish kitchen and contemporary shower room. The beautifully arranged rear garden is a standout feature, offering multiple areas including patio seating areas, lawned sections and a productive vegetable plot, perfect for both relaxation and entertaining.

Ross-on-Wye is a charming historic market town set high above the River Wye, offering a wonderful blend of character, scenery and convenience. With its attractive town centre, independent shops, cafés and restaurants, Ross-on-Wye is a highly desirable place to live. Surrounded by beautiful Herefordshire and Wye Valley countryside, the town is ideal for those who enjoy walking, cycling and outdoor pursuits, while still benefiting from a strong sense of community and excellent everyday amenities.



Approached via a partly glazed UPVC door into:

#### Entrance Porch:

Wooden frosted door leading into the main hallway.

#### Entrance Hallway:

12'2" x 3'0" (3.72m x 0.92m)

Radiator, power & lighting, stairs leading to the first floor, doors to lounge & dining room.

#### Lounge:

11'4" x 11'0" (3.47m x 3.37m)

Front aspect UPVC double glazed bay-fronted sash window, feature wood burner with surround, decorative coving, original picture rail, radiator, TV point, power & lighting.

#### Dining Room:

11'11" x 9'11" (3.64m x 3.03m)

Rear aspect sash window, feature fireplace with surround, original decorative shelving, original picture rail, radiator, power & lighting, understairs storage cupboard, door leading to kitchen.

#### Kitchen:

15'7" x 8'11" (4.76m x 2.72m)

Fitted with a range of base and wall units with worktops, built-in dishwasher & fridge, space for range-style cooker with extractor over, sunken sink with mixer tap and drainer, dual aspect windows (side aspect single glazed window and further UPVC

double glazed window), UPVC patio doors opening onto the garden, walk-in larder, radiator, ceiling spotlights, power & lighting.

#### Larder:

9'6" x 4'10" (2.91m x 1.48m)

Rear aspect single glazed wooden windows, power.

#### First Floor Landing:

11'9" x 5'1" (3.60m x 1.57m)

Split-level landing, power & lighting, stairs leading to the second floor, doors to two of the bedrooms & shower room.

#### Bedroom One:

14'7" x 11'5" (4.46m x 3.49m)

Two front aspect double glazed sash windows, radiator, power & lighting.

#### Bedroom Two:

11'10" x 9'1" (3.63m x 2.79m)

Rear aspect double glazed sash window, fitted wardrobes with hanging & shelving, radiator, power & lighting.

#### Shower Room:

8'8" x 8'6" (2.65m x 2.61)

Double glazed frosted sash window, walk-in double shower with rainfall head, wash hand basin with mixer tap, close-coupled W.C., heated towel rail, airing cupboard, spotlights, extractor fan.

**Second Floor Landing:**

5'10" x 3'1" (1.78m x 0.95m)

Small landing area providing access to further bedrooms.

**Bedroom Three:**

13'11" x 13'7" (4.26m x 4.16m)

Front aspect Velux-style window, exposed brick feature wall, radiator, power, eaves storage, spotlights.

**Bedroom Four:**

8'10" x 8'7" (2.71m x 2.62m)

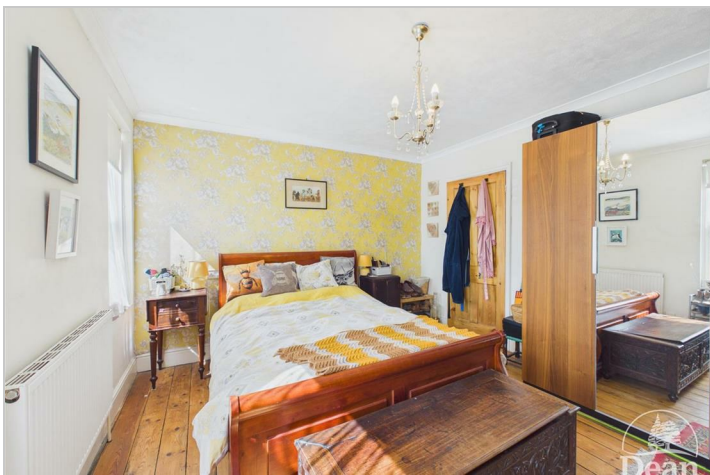
Rear aspect double glazed sash window, radiator, power & lighting.

**Outside:**

To the front, a pathway leads to the entrance with a small planted garden area featuring mature shrubs

and flowers.

The rear garden is beautifully arranged over several areas, beginning with a stone chipped patio seating area ideal for entertaining. Steps lead to a lawned section with established floral borders, continuing to a productive vegetable plot and further lawned area at the top. The garden also benefits from a shed, mature planting throughout and a private, peaceful setting.



Consumer Notes: Dean Estate Agents Ltd have prepared the information within this website/brochure with care and co-operation from the seller. It is intended to be indicative rather than definitive, without a guarantee of accuracy. Before you act upon any information provided, we request that you satisfy yourself about the completeness, accuracy, reliability, suitability or availability with respect to the website or the information, products, services, or related graphics contained on the website for any purpose.

These details do not constitute any part of any Offer, Contract or Tenancy Agreement.

Photographs used for advertising purposes may not necessarily be the most recent photographs, although every effort is made to update photographs at the earliest opportunity. Any reliance you place on such information is therefore strictly at your own risk. All photographic images are under the ownership of Dean Estate Agents Ltd and therefore Dean Estate Agents retain the copyright. You must obtain permission from the owner of the images to reproduce them.

Tenanted Property – we are not always able to show the most recent condition of a property due to tenants' privacy and we may choose to show the photographs of the property when it was last vacant to at least allow clients some idea of the internal condition. Therefore, we would of course, urge you to view before making any decisions to purchase or rent the property and before any costs.

Energy Performance Certificates are supplied to us via a third party and we do not accept responsibility for the content within such reports.

PRC Certificates – Some ex-local authority properties have been repaired in recent years using the PRC Scheme wherein a certificate has been produced by a qualified property engineer. This certificate does not imply the suitability for a mortgage approval and you must satisfy yourself of the work carried out that may meet your lenders criteria.

As with leasehold property or new build development sites, you are likely to be responsible for a contribution to management charges and/or ground rent or a contribution to the development service charge. Please enquire at the time of viewing.

You may also incur fees for items such as leasehold packs and, in addition, you will also need to check the remaining length of any lease before you complete a mortgage application form.

Please ask a member of our team for any help required before committing to purchase a property and incurring expense.

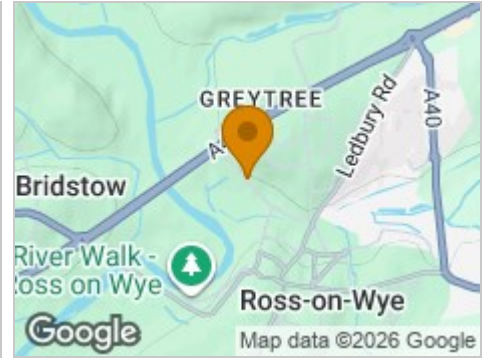
## Road Map



## Hybrid Map



## Terrain Map



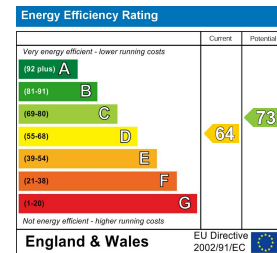
## Floor Plan



## Viewing

Please contact our Coleford Office on 01594 835751 if you wish to arrange a viewing appointment for this property or require further information.

## Energy Efficiency Graph



These particulars, whilst believed to be accurate are set out as a general outline only for guidance and do not constitute any part of an offer or contract. Intending purchasers should not rely on them as statements of representation of fact, but must satisfy themselves by inspection or otherwise as to their accuracy. No person in this firm's employment has the authority to make or give any representation or warranty in respect of the property.